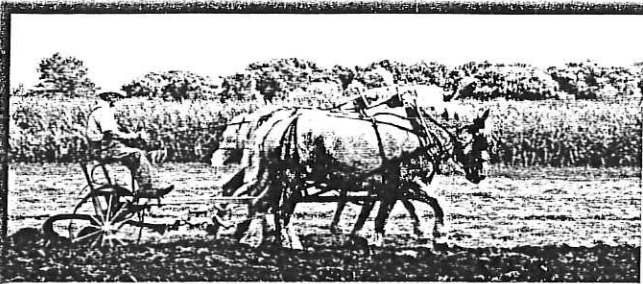


**found**

The dog **found**  
a bone.

**hard**

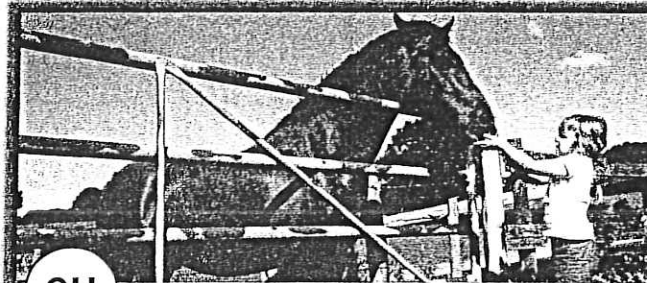
The horses are  
working **hard**.

**near**

The dog is **near**  
the trainer.

**woman**

The **woman**  
walks the dog.

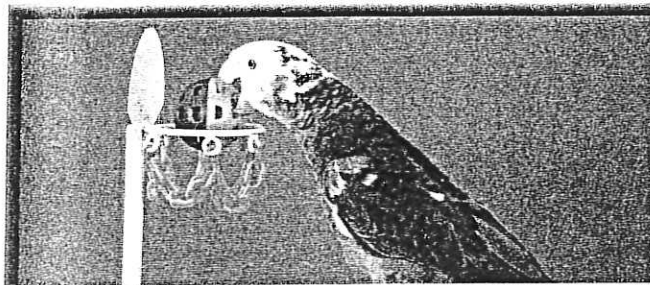
**would**

She **would** like  
to ride.



**write**

She will **write**  
what we need.



**clever**

This bird is  
very **clever**!



**signal**

The trainer gives  
a **signal**.

## Your Turn



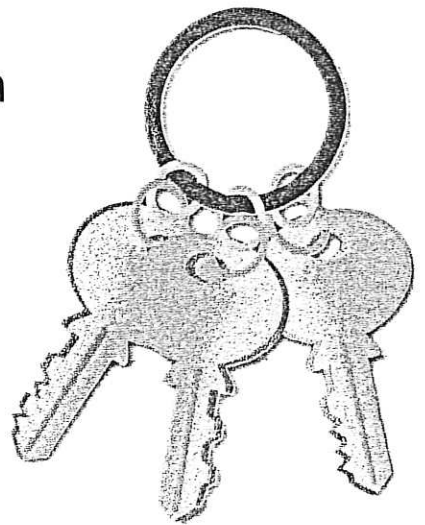
Read the sentence for each word.  
Then make up another sentence.

**Go Digital!** Use the online visual glossary

(t to b, l to r) Peter Timuss/Alamy; Jim Parkin/Alamy; Jim Craig/Alamy; Corbis; John W. Banagan/Photographer's Choice/Getty Images; Paul Mansfield/Flickr/Getty Images; Corbis/PunchStock; Tracey Charleson/Photo Researchers/Getty Images; Minden Pictures/SuprStock

## Long e

The letters y and ey can make the long e sound in puppy and key.



lucky

alley

sunny

buddy

Mickey

city

easy

penny

sleepy

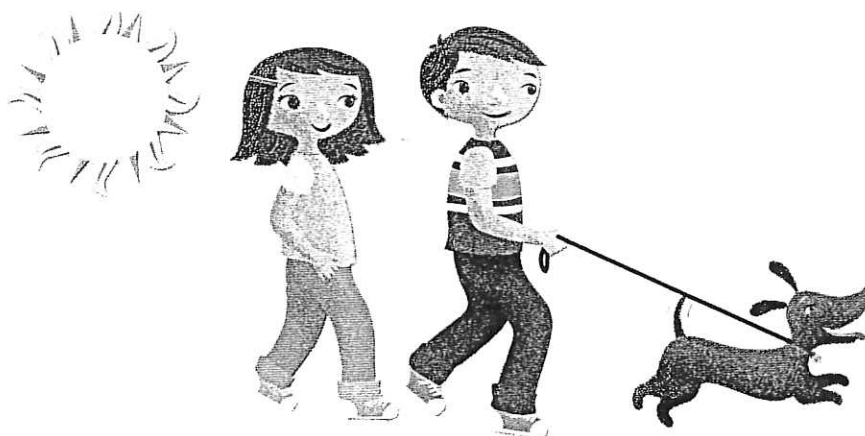
grassy

valley

healthy

Did you lose your key in the alley?

We walk Ziggy when it is sunny.



## Your Turn



Look for these words with long e in "From Puppy to Guide Dog."

puppy      key      Mickey      buddy

lazy      fussy      healthy      city

ready      easy



CCSS

Genre Nonfiction

TIME  
FOR KIDS®



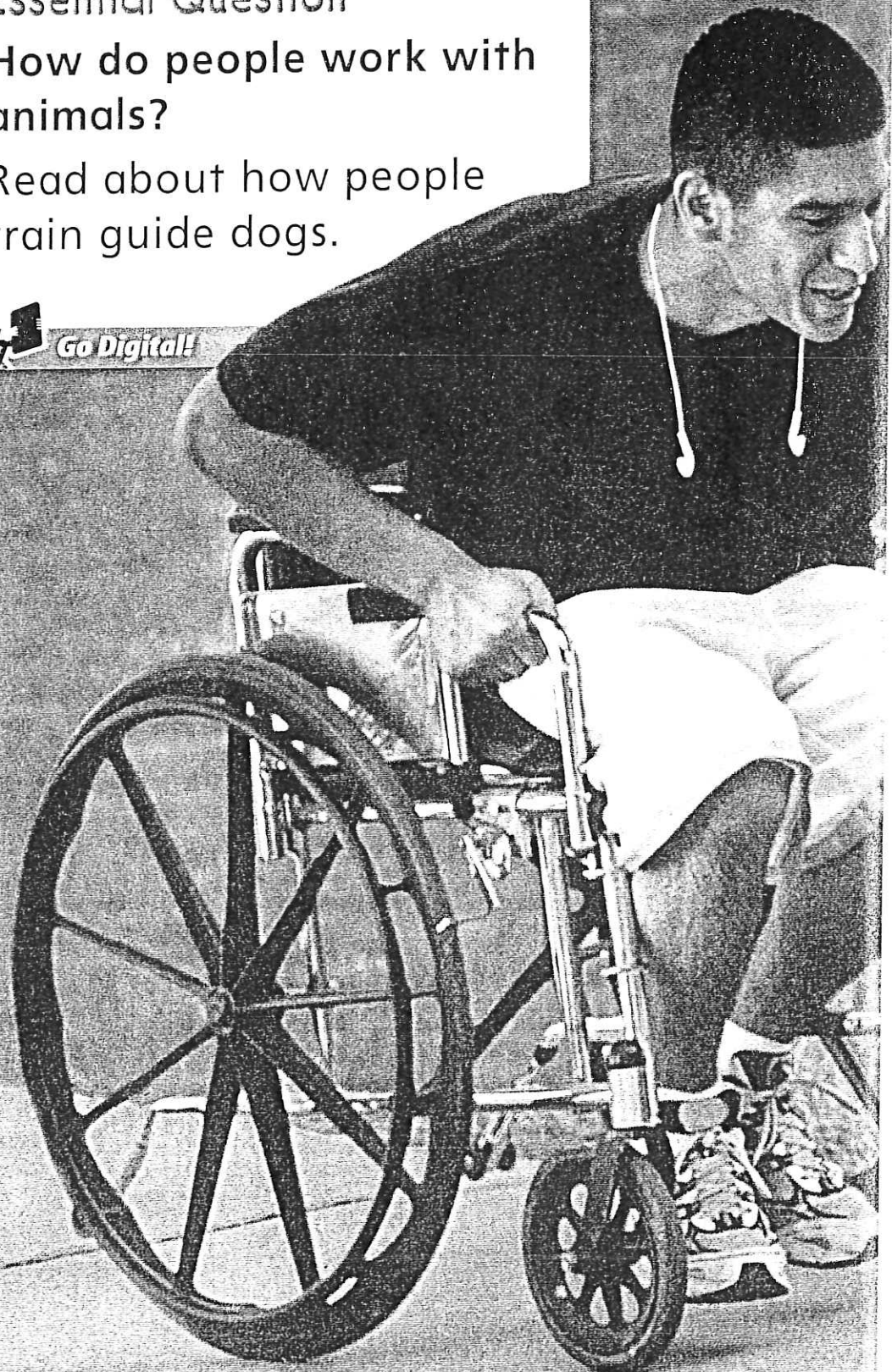
Essential Question

How do people work with animals?

Read about how people train guide dogs.



Go Digital!



# From Puppy to Guide Dog

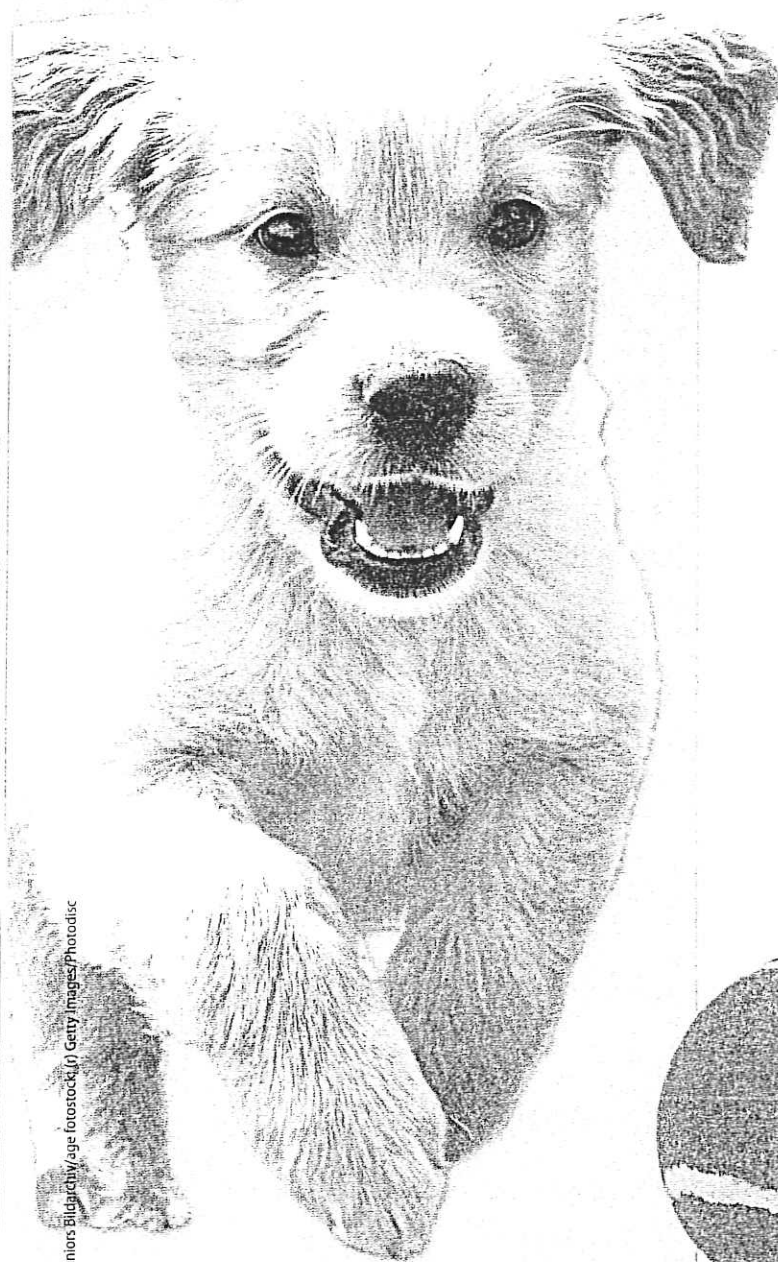
Most dogs are pets. But some dogs help people. What is the key to making a dog a good helping dog?



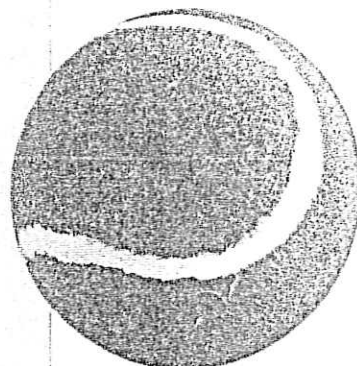


# A Buddy- to-Be

Mickey is a cute and **clever** puppy. He runs, jumps, and plays. One day, when he grows up a bit, Mickey will be a helping dog. He will be a daily buddy to a person who cannot see.



(1) Junior Bildarchiv/age fotostock (2) Getty Images/Photodisc



Helping dogs are called guide dogs. To be a guide dog, a puppy must be bright. It cannot be lazy or fussy. The puppy will need to learn many skills. A new home is **found** for the puppy when it is eight weeks old.

## Fact



Most guide dogs are Labrador retrievers. They are very intelligent and easy to train.

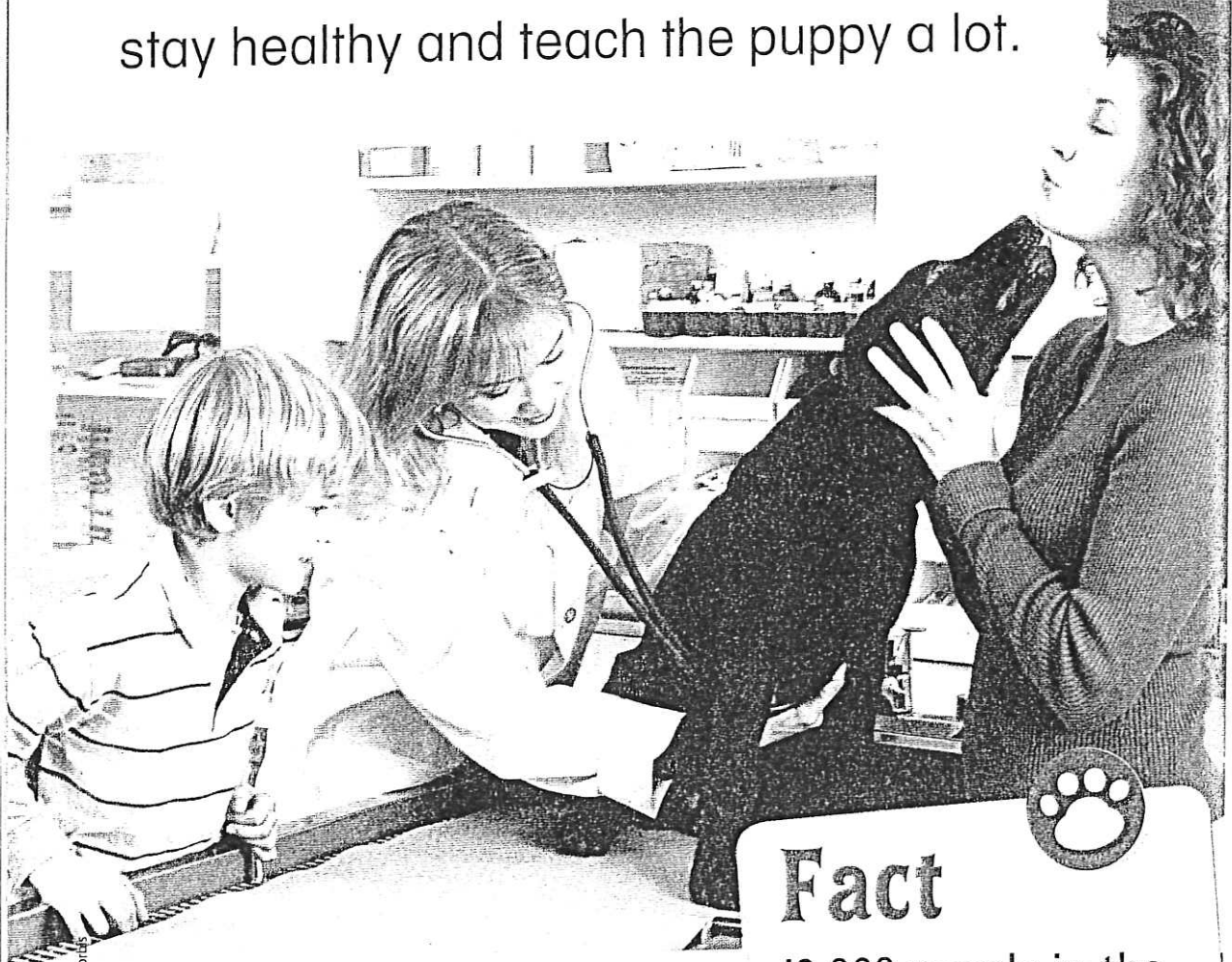
Guide dogs can be big or tiny.





# A Family of Trainers

A puppy like Mickey stays with a family for at least one year. The family plays with it and feeds it. They help the puppy stay healthy and teach the puppy a lot.



Jim Craigmye/Corbis/CORBIS

▲ Each puppy has checkups at the vet.

## Fact

10,000 people in the U.S. and Canada use guide dogs.

Each puppy learns how to act nicely with people and with other animals. The family gets the dog used to a lot of tasks and settings. Puppies may visit many kinds of places in the city. They go to homes and shops.



▲ This dog watches its favorite team.

▼ Every dog must be trained by itself.



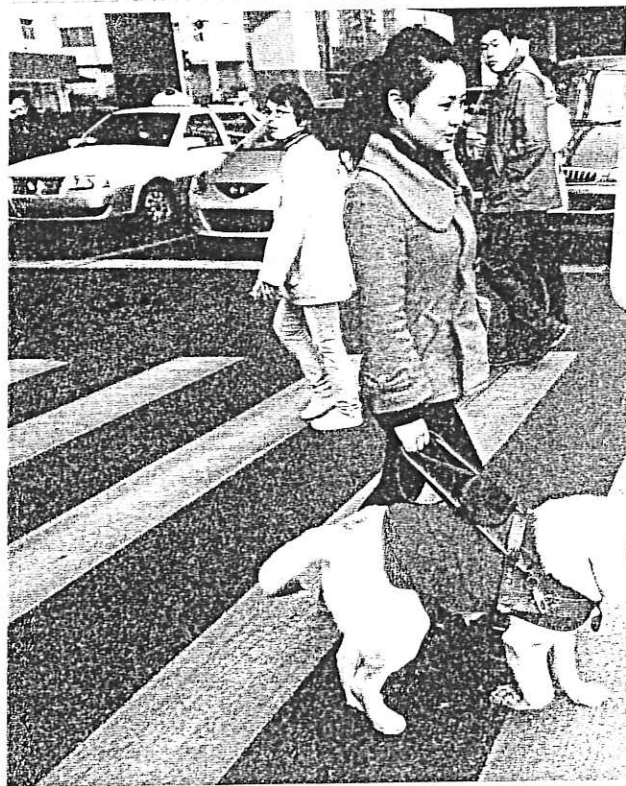
# Learning New Tasks

As time goes by, the dogs are trained how to go across the street. The dog stays right **near** the trainer. It learns to stop at a red **signal**. This will help the dog safely lead a person who cannot see the traffic.

## Fact



Guide dogs are allowed in restaurants, stores, school—any place a person can go.



Zuma Press/Newscom

△ This guide dog learns to cross a street.



Some guide dogs can be trained to help a man or a **woman** who cannot move or walk. He or she might need help with a lot of **hard** tasks both inside and outside the home.



A dog can be trained to get an elevator and to reach objects.



# Eyes and Ears

Some dogs are trained to help people who cannot hear. If the dog hears a bell ringing or a yell, it **would** lightly tug or poke the person with its nose.

A dog can be taught to alert its owner to sounds.

## Fact

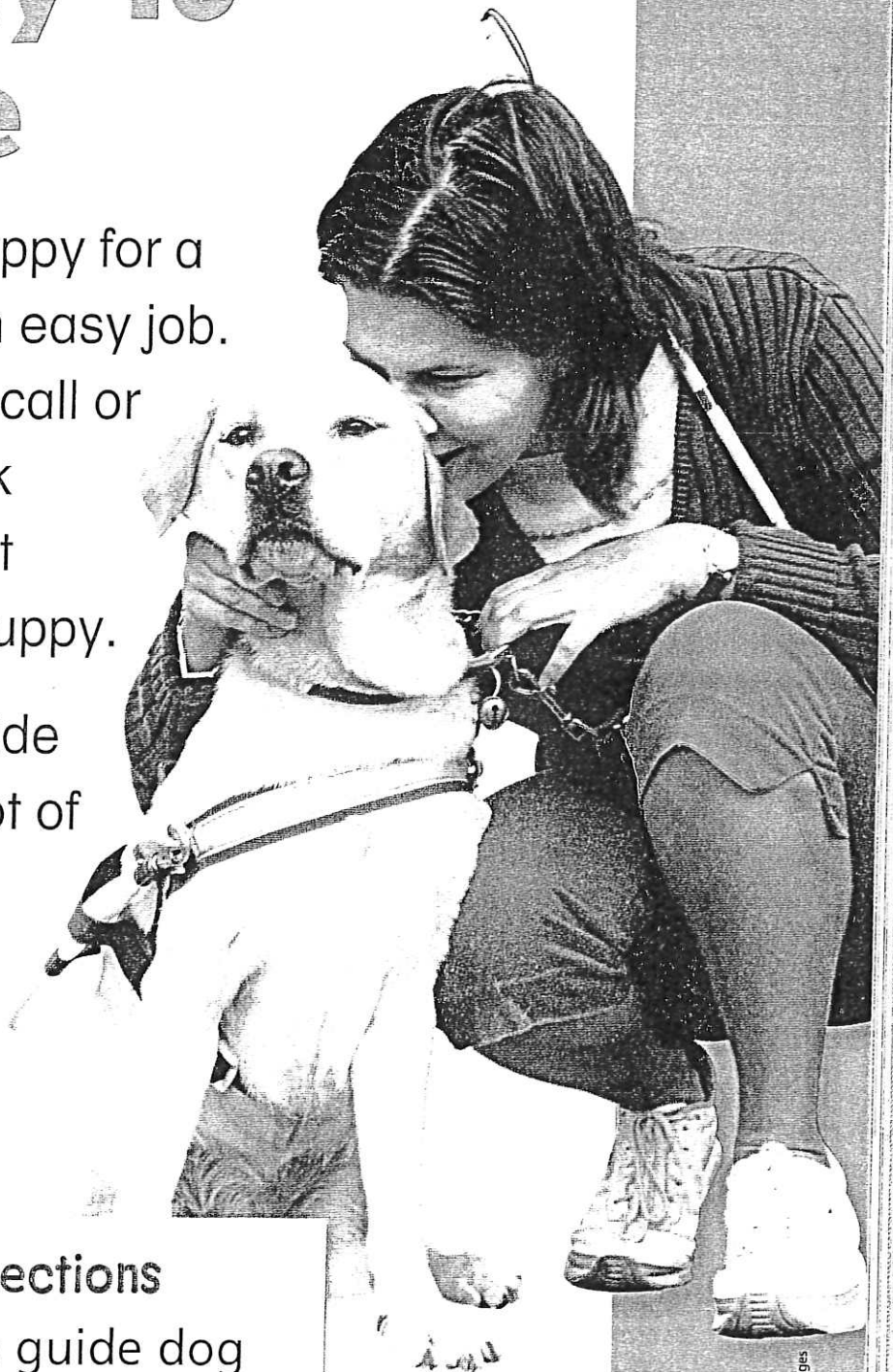


Guide dogs should not be bothered while working.

# Ready to Guide

Training a puppy for a year is not an easy job. Owners may call or **write** to thank the family that raised their puppy.

Training a guide dog helps a lot of people!



## Make Connections

How does a guide dog get trained to help people? **Essential Question**

Altrendo Images/Getty Images



## Sequence

Authors often give information in **sequence**, or time order.



### Find Text Evidence

Find one of the first things that happens to a guide dog puppy.

page 101

Helping dogs are called guide dogs. To be a guide dog, a puppy must be bright. It cannot be lazy or fussy. The puppy will need to learn many skills.

A new home is **found** for the puppy when it is eight weeks old.



First

An eight-week-old puppy leaves its mother.



Next

It lives with a training family for one year.



Then

The puppy learns harder tasks. It becomes a good guide dog.



Last

The guide dog is given to a needy person.

## Your Turn



Talk about the sequence of a guide dog's life in "From Puppy to Guide Dog."

*Go Digital! Use the interactive graphic organizer*



# Readers to..

**Word Choice** Jenny used words that tell time order in her sentences.

## Jenny's How-to Sentences

How can you care for a dog?

First, give it food and water.

Next, walk with it. Then, play fetch. Later, give it a treat.

The dog will be happy!



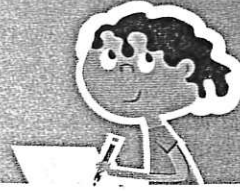
## Your Turn



Tell what words Jenny used to tell time order.

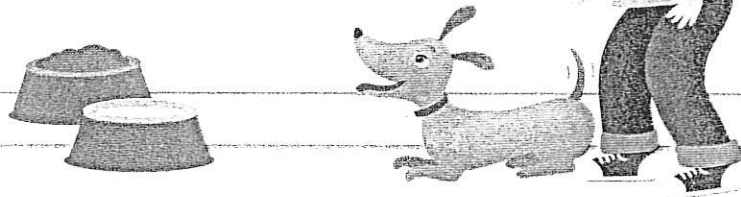


# Writers



**Adverbs That Tell When** Words such as first, always, next, later, tomorrow, soon, early, today, then, and yesterday tell when an action takes place.

First, give it food  
and water.



## Your Turn



- Find other words in Jenny's writing that tell when an action takes place.
- Write new sentences using words that tell when.